

Norman NetProtector 3000

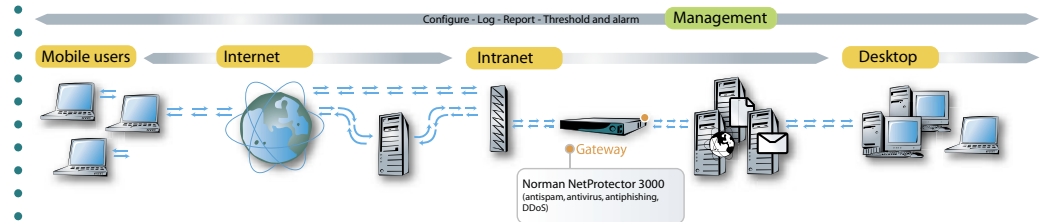
Complete security for diverse needs

The Norman appliance provides total email security, compliance and policy management for the healthcare industry, service providers and a variety of other enterprises from SMEs to the Global 2000.



Product features:

- ✓ High-performance appliance with hardened OS
- ✓ Enhance security architecture with application layer filtering
- ✓ Proactive antivirus including Norman SandBox technology
- ✓ Antispam, caching, custom filtering
- ✓ Supports all industry standard protocols
- ✓ Web GUI for remote management
- ✓ LCD front panel for easy network configuration and status display
- ✓ One-button system recovery to factory default
- ✓ Installs in less than 15 minutes



- Running on Celestix Network's advanced appliance platform, Norman's email security gateway delivers high-performance mail transfer, wire-level encryption, antivirus, antispam, policy management and content filtering in a secure, scalable and robust appliance.

Proactive antivirus

- Norman NetProtector 3000 includes Norman's award winning antivirus. Norman Virus Control's most important features are:

- ✓ On-access and on-demand scanning of files
- ✓ Norman SandBox – revolutionary way to detect new and unknown malware
- ✓ Automatic updates over the Internet – complete product and incremental updates of definition files
- ✓ Proactive email and newsgroup scanning

Norman SandBox

- Norman's SandBox technology detects new and unknown computer viruses, including trojans and worms. Today, an email worm can infect tens of thousands of workstations in a matter of seconds. The need for speed is paramount. Norman's SandBox is a virtual world where everything is simulated. An emulator provides an environment where possible virus infected executables «run» just as they would do on a real system. When execution stops, the SandBox is analyzed for changes. The SandBox is particularly tuned to find new email-, network- and peer-to-peer worms.

Intuitive interface

Point-and-click setup

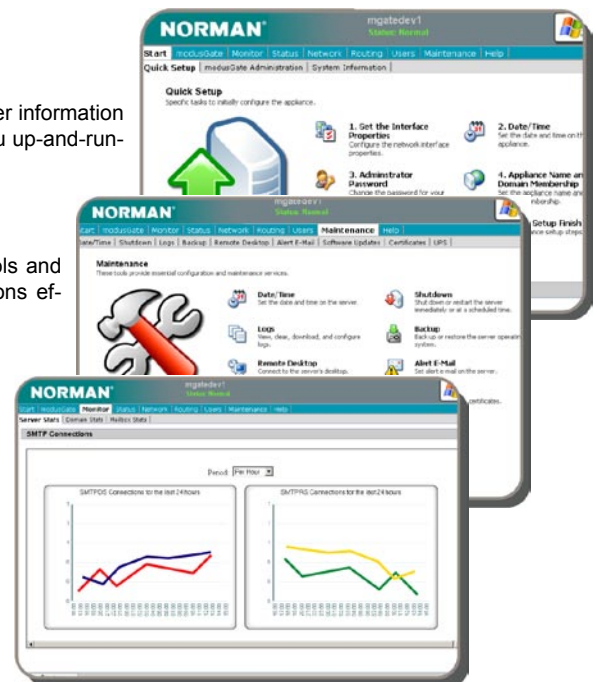
- NetProtector 3000's intuitive interface lets you enter information about your network and organization, and gets you up-and-running in as little as 15 minutes.

Set-and-forget operation

- With its seamless OS integration, easy-to-use tools and auto-updating engine, NetProtector 3000's functions efficiently with no intervention.

Web based monitoring

- Norman NetProtector 3000 not only provides detailed information and alerts on the status of email traffic, but also analyses of the type of incoming and outgoing emails and threats detected.



Norman is one of the world's leading companies within the field of data security. With products for antivirus (virus control), personal firewall, antispam, antiadware and encryption, the company plays an important role in the data industry.

Microsoft
CERTIFIED
Partner



NORMAN[®]
www.norman.com



AV-Test GmbH (www.AV-Test.org) awarded Norman SandBox technology last fall (2004) as the undisputed leader in the fight against new, unknown computer viruses.



Industry leader Network Computing Magazine declares the solution to be the best Windows-based anti-spam after benchmarking more than 25 different world-class anti-spam solutions.



- Designed for organizations that already have an email infrastructure that they don't want to modify. - Install it in front of any email server on any network type without reconfiguring or modifying your existing products.



"Recommended" product mention, giving it a five-star rating for "Value for the Money".

Standard features

Spam Protection and Content Filtering

Norman's filtering engine scans inbound and outbound traffic to stop spam, phishing and other email malware from reaching users' inboxes. Automatically updated to ensure constant protection.

Point-and-click setup

NetProtector 3000's intuitive interface lets you enter information about your network and organization. Using ModusGate gets you up-and-running in as little as 15 minutes.

Proactive virus protection with Norman SandBox

Complete virus protection for inbound and outbound email transfer powered by Norman's revolutionary SandBox antivirus technology. Automatically updated to ensure constant protection.

Enterprise MTA

The appliance includes an RFC 2821-compliant Mail Transfer Agent, providing full caching and transport-layer protection.

Antiphishing

Supports Sender Policy Framework (SPF) and multiple accreditation services

Monitoring and Management

100% web-enabled administration. Can be managed on-site or remotely. NetProtector 3000 offers web client and end-user quarantine reports, full web-based logging, monitoring and reporting.

Robust Firewall

Built-in firewall and hardened OS provide ultimate protection from hackers and malicious code.

Policy Enforcement

Through its powerful scripting engine, NetProtector 3000 can enforce both security and content policies on inbound and outbound email.

Load Balancing

Built-in IP load balancing maintains efficient server performance.

Scalability

NetProtector 3000's architecture is designed to provide robust email security on single and multiple server set ups.

Configurable Actions

NetProtector 3000 can be enabled to reject improper messages inline, quarantine or tag headers or subject lines.

Specifications

	Enterprise series	Global series
Supported mailboxes	Up to 1000	Up to 5000
CPU	2,4GHz	2,8GHz
RAM	1GB	2GB
Platform	19" rackmount 1u formfactor	19" rackmount 1u formfactor

Norman solutions for clients/workstations: Norman Virus Control for Windows 95, 98, Me, NT4.0, 2000, 2003, XP, OS/2, Linux • Norman Virus Control+ • Norman Internet Control for Windows 95, 98, Me, NT4.0, 2000, 2003, XP • Norman Internet Control+ • Norman Ad-Aware • Norman Personal Firewall

Norman solutions for servers: Norman Virus Control for Microsoft Windows NT4.0, 2000, 2003 • Norman Virus Control Firebreak for Novell NetWare 4.11 and later • Norman Virus Control for Linux • Norman Virus Control for OS/2

Norman solutions for web/gateways/mailservers: Norman Online Protection • Norman Email Protection • Norman NetProtector 3000 • NVCnet • Norman Virus Control for Lotus Domino (Win32, OS/2) • Norman Virus Control for Firewall-1 NG • Norman Virus Control for Microsoft Exchange • Norman Virus Control for Microsoft Exchange 5.5 • Norman Virus Control for MIMESweeper



NORMAN[®]
www.norman.com